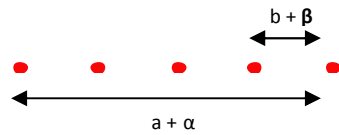


DE-R 263 Diffractive Optical Element



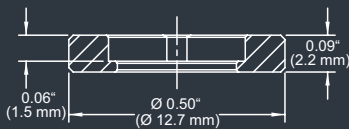
- **Element Number: DE-R 263**
- **Current Product Revision: B**
- Description: 1 : 5 Dot Line
- Number of Dots: 5 Dots
- Substrate Material: Polymethyl Methacrylate (PMMA)
- Size (Ø x Thickness): 8 x 1 mm
- Design Wavelengths: 635 nm
- Recommended Wavelength Range: 450-700 nm
- Minimum Recommended Beam Diameter: 0.5 mm

Within the recommended wavelength range, the zeroth order has a similar power than the off-axis beams of the dot line. Line width and line angles and the ratio between central spot and off-axis spots ('zero order intensity', see reverse page) will vary most with the wavelength.

Diffraction efficiencies given on this datasheet have been measured using elements of product revision B.

MOUNTED VERSION

For testing or setups under laboratory conditions we offer a version mounted in 12.7 mm stainless steel frame for use with standard laboratory holders.



Ø 0.32" (Ø 8.0 mm)

Thorlabs 8 mm steel lens adapter

COLLIMATED / CONVERGING LASER

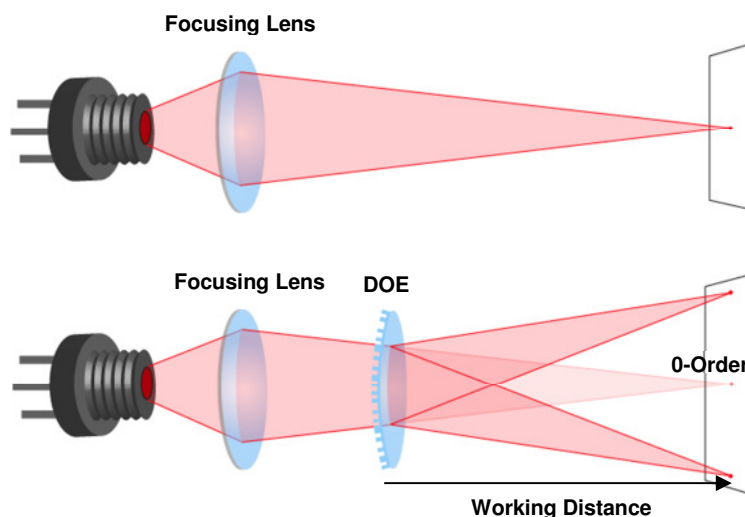
The laser can be collimated for long range use or converging for a fixed working distance.

Please note that the size/thickness of each spot or line depends on the focusing of the laser.

Line Geometry and Diffraction Angles

Wavelength	Pattern Size @ 100 mm Distance		Pattern Angles	
	a	b	α	β
488 nm	8.1 mm	2.0 mm	4.6°	1.15°
543 nm	9.0 mm	2.2 mm	5.1°	1.28°
594 nm	9.8 mm	2.5 mm	5.6°	1.40°
635 nm	10.5 mm	2.6 mm	6.0°	1.50°
650 nm	10.7 mm	2.7 mm	6.1°	1.54°
730 nm	12.1 mm	3.0 mm	6.9°	1.73°
780 nm	12.9 mm	3.2 mm	7.4°	1.84°
808 nm	13.4 mm	3.4 mm	7.6°	1.91°

Setup



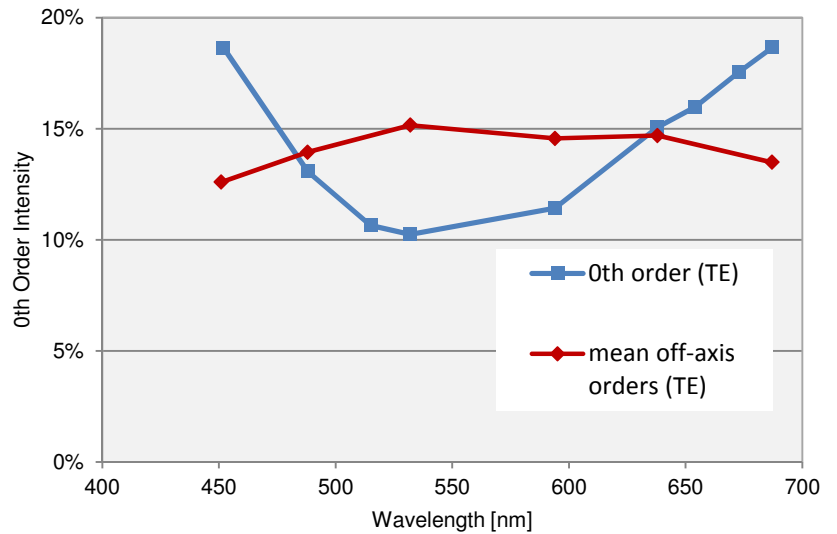
Laser diodes are the most common light source to be used with diffractive optical elements, but other laser light sources may also be used.

The DOEs are best used with collimated or convergent laser sources. The microstructure surface should be oriented towards the laser.

The 0-order spot is equivalent in size and shape to the original beam, but its power is attenuated.

Diffraction Zero Order Intensity VS Off-axis Order Intensity:

Wavelength	0-Order Intensity	Mean OA intensity
452	19%	12.8%
488	13%	14.0%
515	11%	
532	10%	15.3%
594	11%	14.5%
638	15%	14.7%
654	16%	
673	18%	
687	19%	13.6%



Line Power Profile

off-axis orders at 654nm

